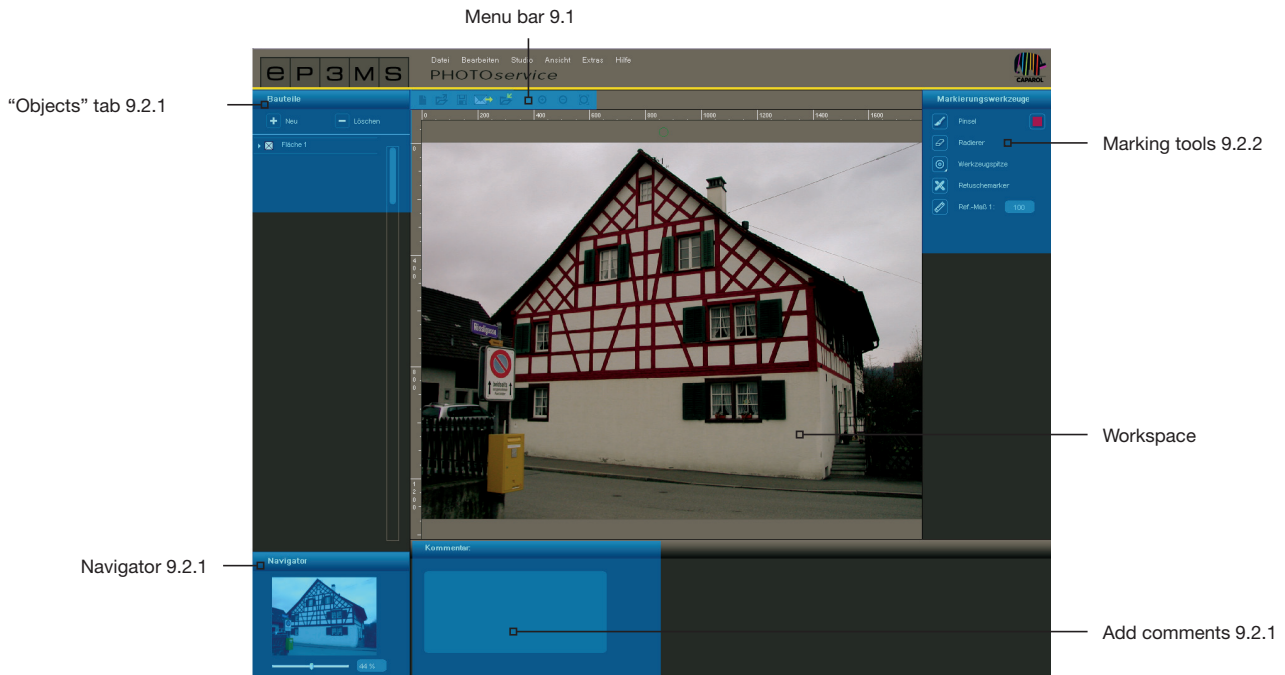


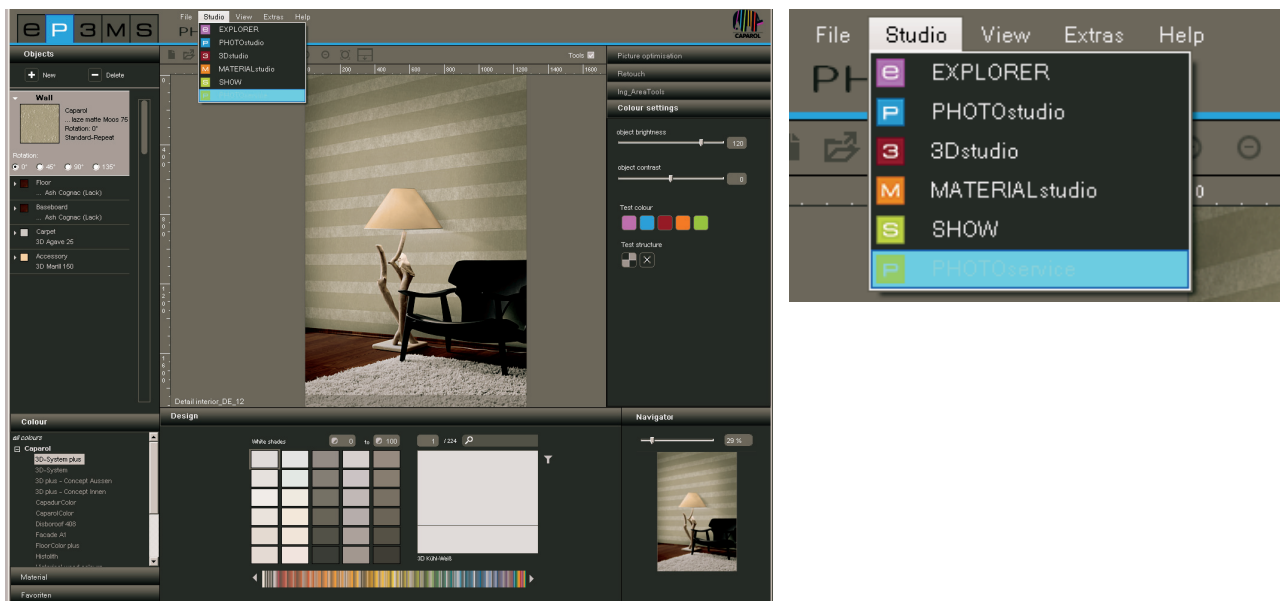
9. PHOTOService

No time to edit your own images? The PHOTOService offers the possibility of having your image data retouched and masked according to individual requirements. Send a roughly marked photo to the PHOTOService via the Internet. The prepared image data are ready for download within 2-3 working days. You can then start designing in the PHOTOstudio immediately.

There is a charge for this service. Further information about prices and terms of payment can be found in the "PHOTOService" section at www.spectrum-online.eu.

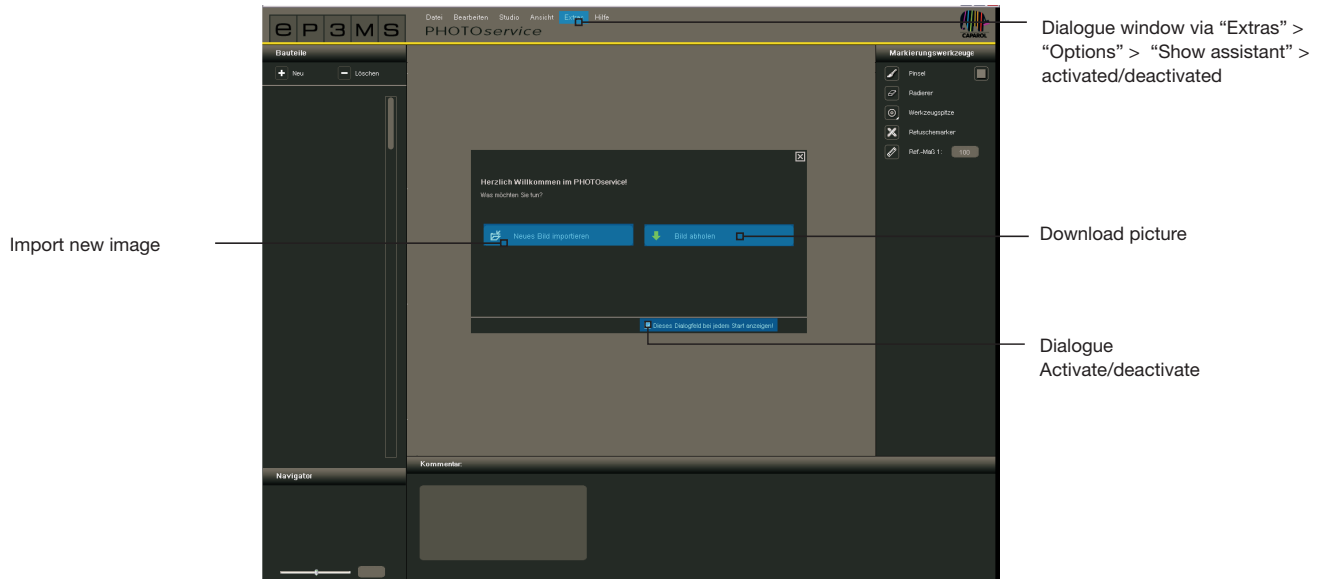


Use the main navigation "Studio" > "PHOTOService" to reach the PHOTOService section.



Assistant

When you open the PHOTOService an assistant window appears. Here, you can choose between importing a new image or downloading a picture prepared by the PHOTOService.



Click “Import new image” and load a photo from your PC or an external data carrier into the PHOTOService area (refer to chapter 9.1 “Menu bar” for more information).

Click “Download picture” to download a photo that you have sent to the PHOTOService (see chapter 9.4 “PHOTOService download”).

If you do not require the assistant in future, remove the tick next to “Show dialogue on every start up” in the lower area of the window. Alternatively, you can control the display option via the main navigation under “Extras”>“Options” by changing from “Activated” to “Deactivated” in the “Display assistant” field.

9.1 Menu bar



Import new image

Choose this button and a window will open where you can browse your PC or an external data carrier for an image. Then click “Open” to load the picture to the PHOTOService area.

Save

Click the “Save” button to save a prepared picture. A window appears showing the current memory location and name of the file on your computer.

Send

You can use the “Send” button to send your photo for processing by the PHOTOService via Internet. More detailed information about sending data can be found in chapter 9.3.



Download

Use the “Download” button to download your photo directly to SPECTRUM 4.0 when it has been completed by the PHOTOService team. More detailed information about sending data can be found in chapter 9.4.



Zoom in

Click this button to enlarge the size of the image in the workspace.



Zoom out

Use this button to reduce the size of the image in the workspace.



Fit to screen

You can adapt the size of your image to fit the workspace with the aid of this button.

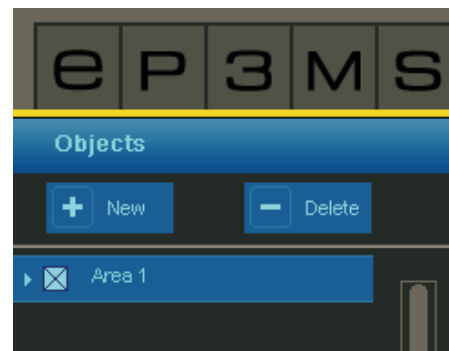
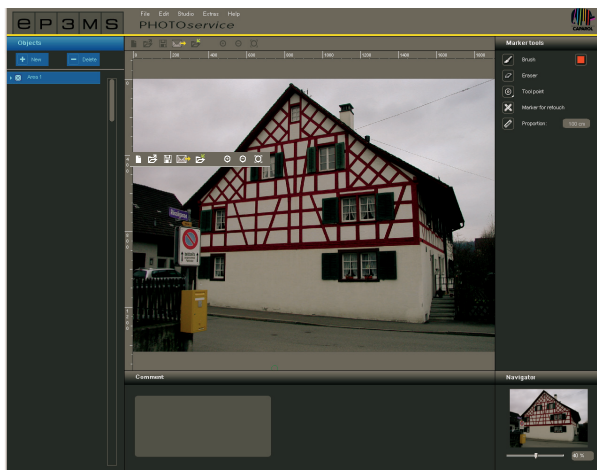
9.2 Prepare PHOTOService

9.2.1 Components

Create surfaces

After you have imported a photo to the PHOTOService area, create the areas you require first in the “Component” time. A first component with the name “Area 1” already exists as the default setting. You can change the name by double-clicking the component text field. Alternatively, you can change the name by right-clicking on a component.

You can add further components by clicking the “New” button, and you can remove the component again by marking it and then clicking the “Delete” button.



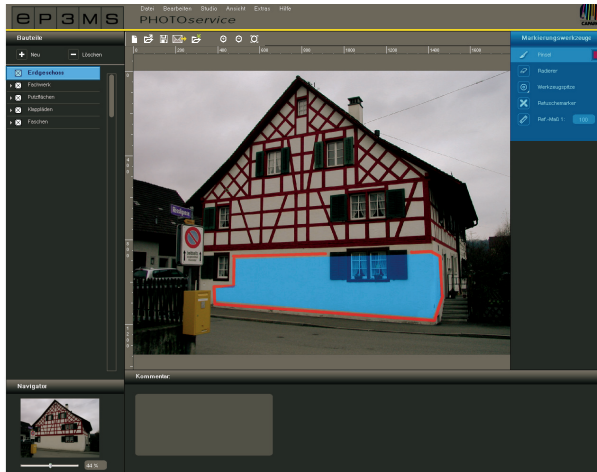
Each component is automatically assigned a mask colour when it is created. This enables the different components to be distinguished from one another after marking. You can create a maximum of 32 components.

Note: When having an image prepared using PHOTOService, a total of five components and the areas created for them are included in the standard price. An additional charge is made per component above this number. Further information about prices is available on the Internet under www.spectrum-online.eu in the PHOTOService section.

9.2.2 Marking tools

Mark components in the picture

After you have created a new component, roughly mark the area (or more than one area) in the picture.

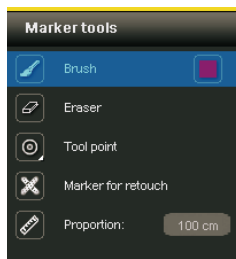


You have the following “marking tools” available on the right-hand side of the program interface for marking components that are to be masked for you:



Brush

You can use the brush to mark the required areas for a component. To do this, select the area in the “Component” tab first and then select “Brush” in the required point size (the size of the point can be changed under “Tool point”). Now roughly copy the outlines of the area to be masked in the picture. You can also set corner points through clicks, then connect these automatically with straight lines by keeping the “Shift” key pressed. Mark the required area in the picture for each component.



Rubber

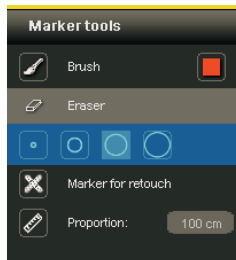
You can use this tool to correct mistakes in component marking by deleting superfluous brushstrokes. To do this, select the respective component in the “Component” tab, click the “Rubber” tool and erase the brushstrokes to be deleted, keeping the left mouse button pressed. Here, too, points set (clicks) are also connected by straight lines with the “Shift” key pressed.





Tool point

There are four differently sized tool points available in sizes 8, 16, 32 and 64 for use with the “Brush” and “Rubber” tools. You can select the respective point, shown as a circle, by clicking it.

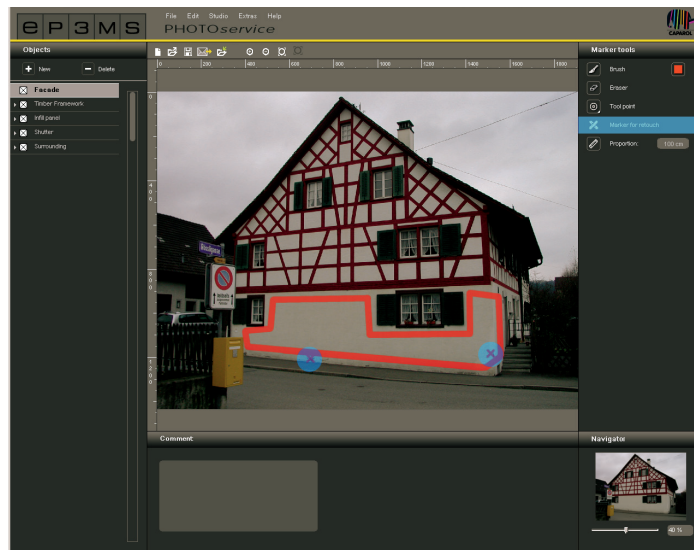
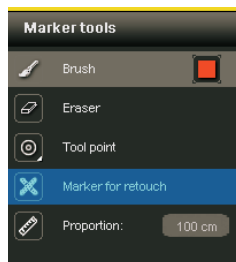


Retouch marker

The “Retouch marker” tool allows you to mark “blemishes” in the picture that are to be removed by the PHOTOService. For this, select the “Retouch marker” tool and the required component. Then click on the spot in the picture that is to be retouched. A coloured “X” will appear at the spot.

To help those processing the picture, you can add a comment underneath the workspace as well (see “Add comment”).

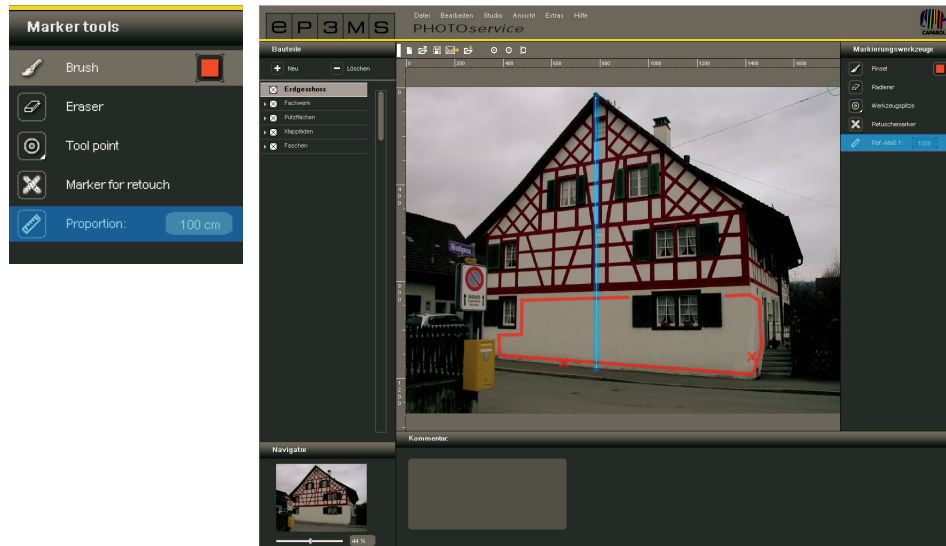
Note: Retouch markers can be removed again using the “Rubber” tool.



Proportion

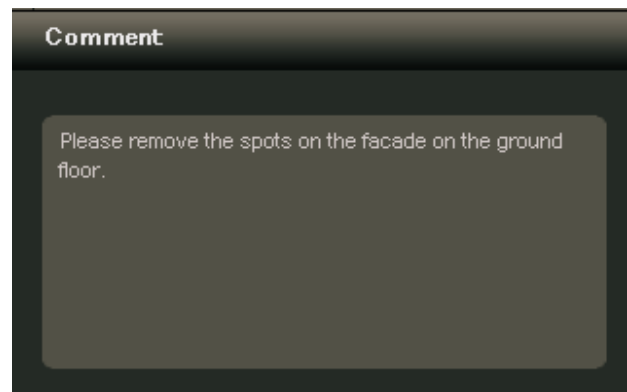
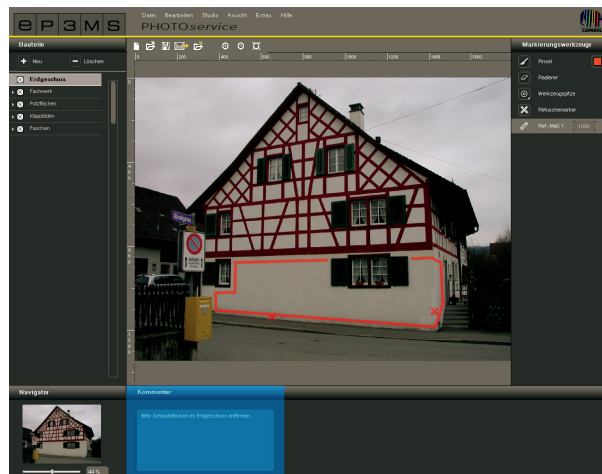
Since all the component masks required are prepared for design with colour and with materials, it is important for a “proportion” to be defined for the size of the object. To do this, select the “Proportion” tool. Click the picture at the spot where the proportion is to be created, and choose the final position by clicking again. Then enter a figure in centimetres (cm) for the real length of the straight line just created in the number field.

Note: The proportion only has to be entered once per picture and is used accordingly for the material dimensions for all components. It can be prepared in any component and is visible on all of them. Once a proportion has been created it is automatically deleted when you create a new one using the proportion tool.



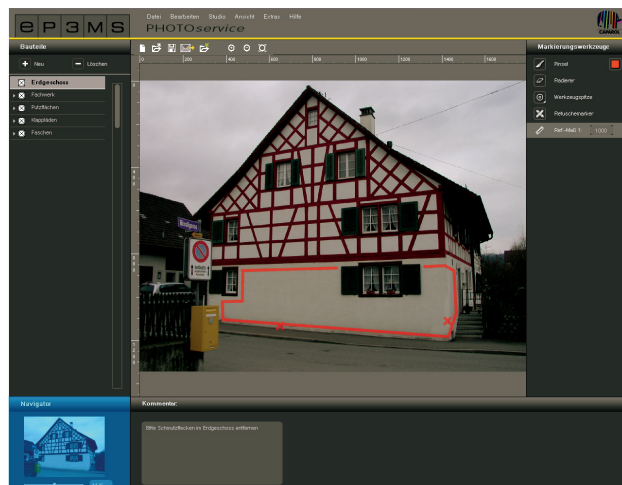
Comment

You can add helpful comments i.e. short notes about the components selected or retouch wishes e.g. “Faschen - all” or “Railing: without hand rail” in the “Comment” tab underneath the workspace - this will make your editing requirements for the picture clearer.



Navigator

With the navigator you can zoom in and out on the picture like in the PHOTOService for editing work (see chapter 5.3.3 for more information on the navigator). Alternatively you can move the scroll wheel on the computer mouse.



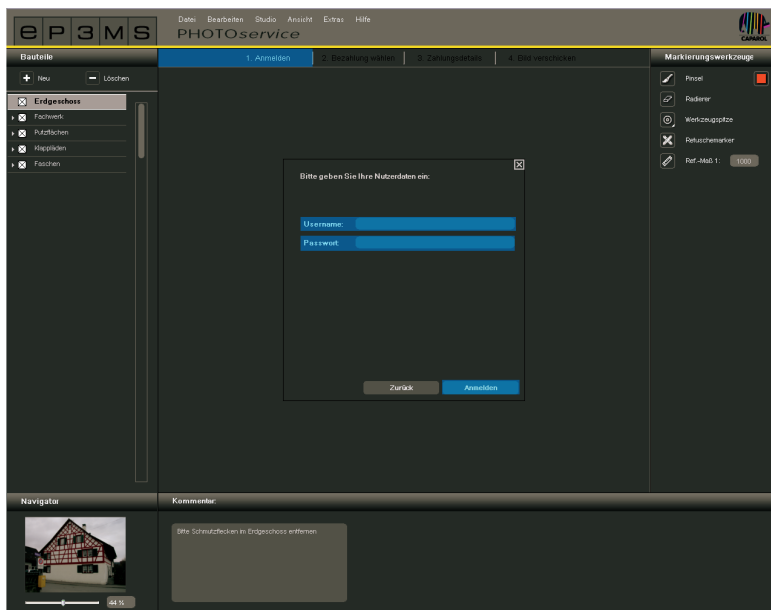
9.3 PHOTOService - Send picture



When you have colour-marked all the required areas of a picture, send it directly in SPECTRUM 4.0 by clicking the “Letter” symbol in the PHOTOService menu bar.

Alternatively, you can trigger the sending procedure using “File”>“Send picture” in the program navigation. A window is opened requesting your user name and password. Enter the data, click “Login” and follow the instructions.

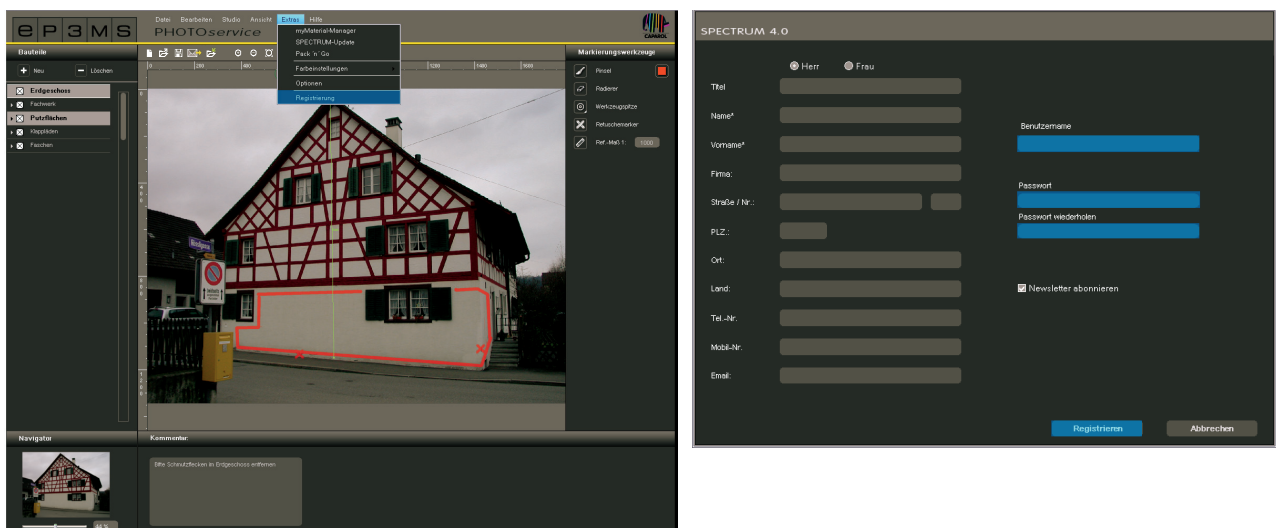
If you do not have a user name or password, you must register to be able to use the PHOTOService (see “Register”).



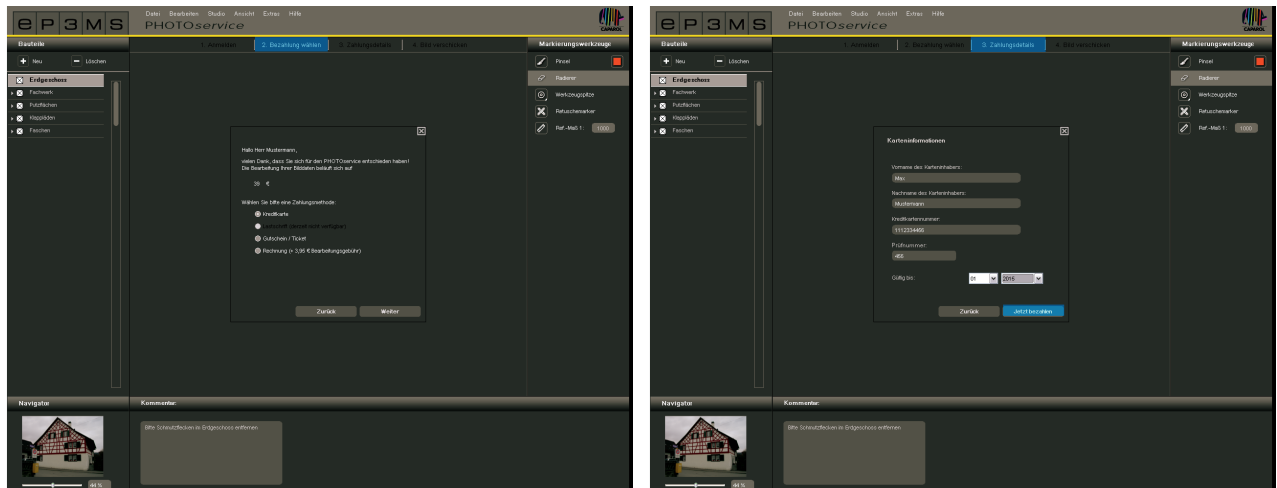
Register

To register for the PHOTOService and the newsletter (optional), select “Extras”>“Register” in the main navigation. Complete the form and choose a user name and password. Then click “Register”.

You are now registered as a SPECTRUM 4.0 user and can use your own “User data” for a PHOTOService order.



Finally you will be shown a view to check your picture and the specifications you have made. Confirm the correct composition and send your order by clicking “Send”. You will then be informed by the system about conditions of payment, you can read about these in chapter 9.5 as well.

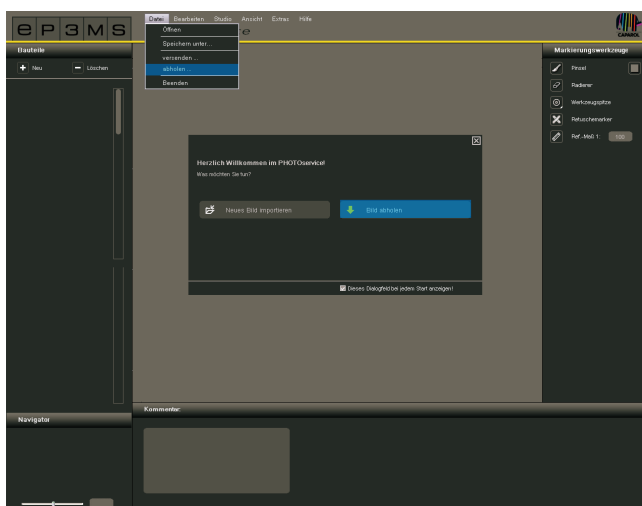


9.4 PHOTOService - Download picture

Your prepared image data are ready for download within 2-3 working days. You will receive an e-mail to the e-mail address you gave during registration. You can now download your pre-masked picture from the PHOTOService directly in SPECTRUM 4.0 and begin design immediately in the PHOTOSudio.



Use the “Download picture” button in the PHOTOService menu bar or “File”>“Download picture” in the main navigation to download your picture. Log in with the access data given during registration and follow the download instructions.



9.5 Payment

There are different online payment possibilities available for you for the SPECTRUM 4.0 PHOTOService: credit card, debit advice procedure, invoice and payment using voucher numbers. You can choose the type of payment when you send your PHOTOService order in SPECTRUM 4.0.

PHOTOService voucher numbers

For convenient payment, purchase voucher numbers that you can redeem directly when uploading the picture data. The voucher numbers have a code that you can quote in your order. Voucher numbers can be ordered individually or in packs of 5 from the Caparol shop at www.caparol-shop.de.

